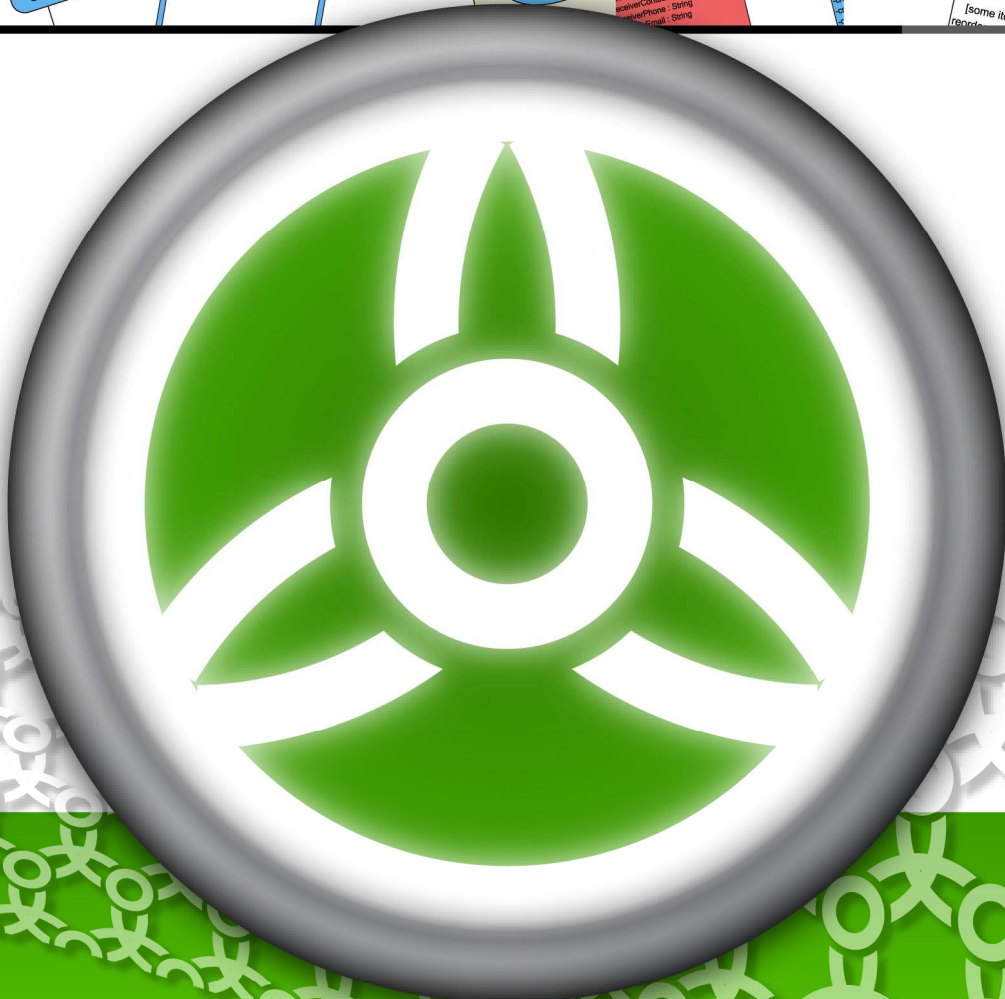
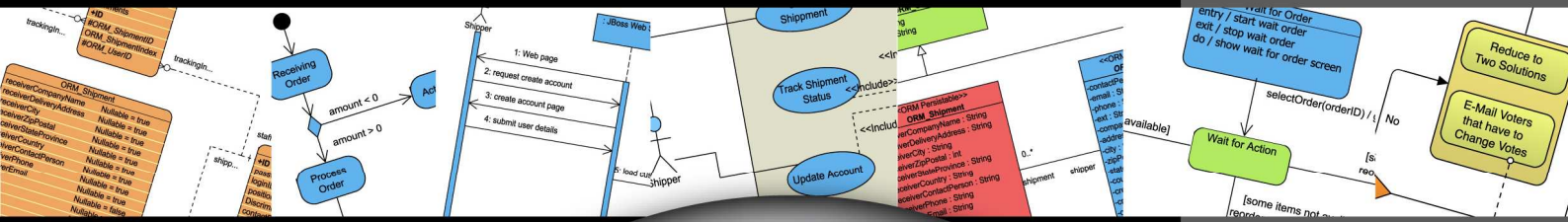


Visual Paradigm SDE for Java Installation Guide

Streamlined design and development environment



Smart Development Environment 4.0 for Eclipse Installation Guide

The software and documentation are furnished under the Smart Development Environment for Eclipse license agreement and may be used only in accordance with the terms of the agreement.

Copyright Information

Copyright © 1999-2007 by Visual Paradigm. All rights reserved.

The material made available by Visual Paradigm in this document is protected under the laws and various international laws and treaties. No portion of this document or the material contained on it may be reproduced in any form or by any means without prior written permission from Visual Paradigm.

Every effort has been made to ensure the accuracy of this document. However, Visual Paradigm makes no warranties with respect to this documentation and disclaims any implied warranties of merchantability and fitness for a particular purpose. The information in this document is subject to change without notice.

All examples with names, company names, or companies that appear in this document are imaginary and do not refer to, or portray, in name or substance, any actual names, companies, entities, or institutions. Any resemblance to any real person, company, entity, or institution is purely coincidental.

Trademark Information

Smart Development Environment for Eclipse is registered trademark of Visual Paradigm.

Sun, Sun ONE, Java, Java2, J2EE and EJB, NetBeans are all registered trademarks of Sun Microsystems, Inc.

Eclipse is registered trademark of Eclipse.

JBuilder is registered trademark of Borland Corporation.

IntelliJ and IntelliJ IDEA are registered trademarks of JetBrains.

Microsoft, Windows, Windows NT, Visio, and the Windows logo are trademarks or registered trademarks of Microsoft Corporation.

Oracle is a registered trademark, and JDeveloper is a trademark or registered trademark of Oracle Corporation.

BEA is registered trademarks of BEA Systems, Inc.

BEA WebLogic Workshop is trademark of BEA Systems, Inc.

Rational Rose is registered trademark of International Business Machines Corporation.

WinZip is a registered trademark of WinZip Computing, Inc.

Other trademarks or service marks referenced herein are property of their respective owners.

Smart Development Environment for Eclipse License Agreement

THE USE OF THE SOFTWARE LICENSED TO YOU IS SUBJECT TO THE TERMS AND CONDITIONS OF THIS SOFTWARE LICENSE AGREEMENT. BY INSTALLING, COPYING, OR OTHERWISE USING THE SOFTWARE, YOU ACKNOWLEDGE THAT YOU HAVE READ THIS AGREEMENT, UNDERSTAND IT, AND AGREE TO BE BOUNDED BY ALL OF THE TERMS AND CONDITIONS OF THIS SOFTWARE LICENSE AGREEMENT.

1. **Limited License Grant.** Visual Paradigm grants to you ("the Licensee") a personal, non-exclusive, non-transferable, limited, perpetual, revocable license to install and use Visual Paradigm Products ("the Software" or "the Product"). The Licensee must not re-distribute the Software in whole or in part, either separately or included with a product.
2. **Restrictions.** The Software is confidential copyrighted information of Visual Paradigm, and Visual Paradigm and/or its licensors retain title to all copies. The Licensee shall not modify, adapt, decompile, disassemble, decrypt, extract, or otherwise reverse engineer the Software. Software may not be leased, rented, transferred, distributed, assigned, or sublicensed, in whole or in part. The Software contains valuable trade secrets. The Licensee promises not to extract any information or concepts from it as part of an effort to compete with the licensor, nor to assist anyone else in such an effort. The Licensee agrees not to remove, modify, delete or destroy any proprietary right notices of Visual Paradigm and its licensors, including copyright notices, in the Software.
3. **Disclaimer of Warranty.** The software and documentation are provided "AS IS," WITH NO WARRANTIES WHATSOEVER. ALL EXPRESS OR IMPLIED REPRESENTATIONS AND WARRANTIES, INCLUDING ANY IMPLIED WARRANTY OF MERCHANTABILITY, FITNESS FOR A PARTICULAR PURPOSE, TITLE OR NON-INFRINGEMENT, ARE HEREBY EXCLUDED. THE ENTIRE RISK AS TO SATISFACTORY QUALITY, PERFORMANCE, ACCURACY AND EFFORT IS WITH THE LICENSEE. THERE IS NO WARRANTY THE DOCUMENTATION, Visual Paradigm's EFFORTS OR THE LICENSED SOFTWARE WILL FULFILL ANY OF LICENSEE'S PARTICULAR PURPOSES OR NEEDS. IF THESE WARRANTIES ARE UNENFORCEABLE UNDER APPLICABLE LAW, THEN Visual Paradigm DISCLAIMS SUCH WARRANTIES TO THE MAXIMUM EXTENT PERMITTED BY SUCH APPLICABLE LAW.
4. **Limitation of Liability.** Visual Paradigm AND ITS LICENSORS SHALL NOT BE LIABLE FOR ANY DAMAGES SUFFERED BY THE LICENSEE OR ANY THIRD PARTY AS A RESULT OF USING OR DISTRIBUTING SOFTWARE. IN NO EVENT WILL Visual Paradigm OR ITS LICENSORS BE LIABLE FOR ANY LOST REVENUE, PROFIT OR DATA, OR FOR DIRECT, INDIRECT, EXEMPLARY, SPECIAL, CONSEQUENTIAL, INCIDENTAL OR PUNITIVE DAMAGES, HOWEVER CAUSED AND REGARDLESS OF THE THEORY OF LIABILITY, ARISING OUT OF THE USE OF OR INABILITY TO USE THE SOFTWARE, EVEN IF Visual Paradigm HAS BEEN ADVISED OF THE POSSIBILITY OF SUCH DAMAGES.

5. **Termination.** The Licensee may terminate this License at any time by destroying all copies of Software. Visual Paradigm will not be obligated to refund any License Fees, if any, paid by the Licensee for such termination. This License will terminate immediately without notice from Visual Paradigm if the Licensee fails to comply with any provision of this License. Upon such termination, the Licensee must destroy all copies of the Software. Visual Paradigm reserves all rights to terminate this License.

SPECIFIC DISCLAIMER FOR HIGH-RISK ACTIVITIES. The SOFTWARE is not designed or intended for use in high-risk activities including, without restricting the generality of the foregoing, on-line control of aircraft, air traffic, aircraft navigation or aircraft communications; or in the design, construction, operation or maintenance of any nuclear facility. Visual Paradigm disclaims any express or implied warranty of fitness for such purposes or any other purposes.

NOTICE. The Product is not intended for personal, family or household use; rather, it is intended exclusively for professional use. Its utilization requires skills that differ from those needed to use consumer software products such as word processing or spreadsheet software.

GOVERNMENT RIGHTS. If the Software is licensed by or on behalf of a unit or agency of any government, the Licensee agrees that the Software is "commercial computer software", "commercial computer software documentation" or similar terms and that, in the absence of a written agreement to the contrary, the Licensee's rights with respect to the Software are limited by the terms of this Agreement.

Acknowledgments

This Product includes software developed by the Apache Software Foundation (<http://www.apache.org>). Copyright © 1999 The Apache Software Foundation. All rights reserved.

Table of Contents

Chapter 1 - Installing Smart Development Environment for Eclipse

Downloading Visual Paradigm Suite	1 -2
Installing SDE-EC	1 -4
Starting SDE-EC	1 -7
Uninstalling SDE-EC	1 -8
Uninstalling Visual Paradigm Suite	1 -9

Chapter 2 - Installing Smart Development Environment for Eclipse with No-Install

Introduction to the No-Install version	2 -2
Downloading Visual Paradigm Suite	2 -2
Installing SDE-EC	2 -4
Starting SDE-EC	2 -6
Uninstalling SDE-EC	2 -8

1

Installing SDE For Eclipse

Chapter 1 - Installing Smart Development Environment for Eclipse

Installing SDE-EC (Smart Development Environment for Eclipse) is an easy task. However, there do have things that you should be aware of. For example, about the relationship between SDE-EC and Visual Paradigm Suite, and how to import a valid license key. This chapter will show you how to get SDE-EC started from downloading to running the application. Here are the covered topics:

- Downloading Visual Paradigm Suite from the Internet
- Installing Visual Paradigm Suite and SDE-EC
- Start the application
- Importing a valid license key

Downloading Visual Paradigm Suite

There is no separate installer made for SDE-EC. In order to install SDE-EC, you must download and install Visual Paradigm Suite, an application suite that includes all the Visual Paradigm products, and install SDE-EC from the suite. To download Visual Paradigm Suite:

1. Visit Visual Paradigm's official download site at: <http://www.visual-paradigm.com/download/>
2. Click on the image for Visual Paradigm Suite.

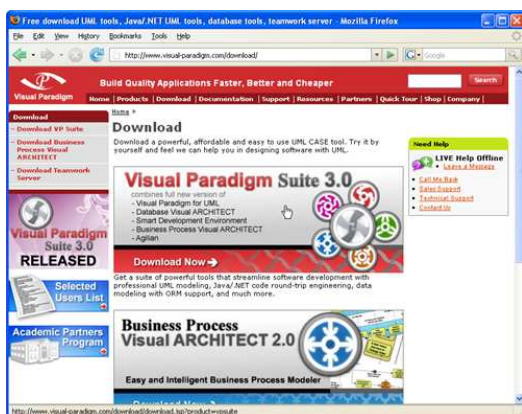


Figure 1 - Click to visit the download page of Visual Paradigm Suite

3. Enter your account information, and click **Continue** to proceed.

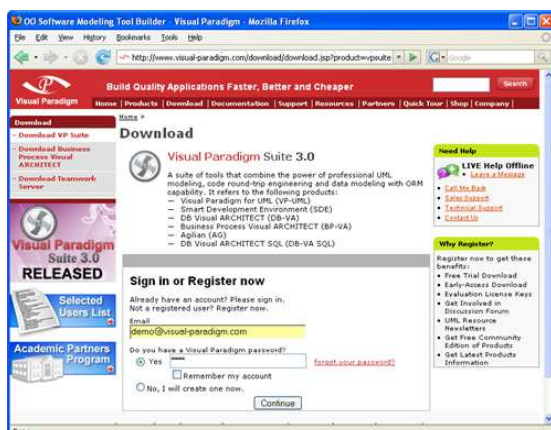


Figure 2 - Login to proceed to download

4. Under the list of **Evaluation Product(s)**, press on the plus sign near **Smart Development Environment** to expand the list of SDEs. Then, select *for Eclipse*. This option will affect the capability of the evaluation key, which will be sent upon downloading the suite.
5. Choose the way of receiving the evaluation key, or not to receive it. Here are the description of each of the possible ways:

Ways of receiving an evaluation key	Description
Do not send me the evaluation key	Just to download the suite without the need of an evaluation key.
Send via email as attachment	You will receive an email attached with the key file. Make sure your server allows email with attachments for choosing this option.
Send via email as URL	You will receive an email, which includes a download link of the key file.

6. Select your operating system from the **Platform** drop-down menu.
7. From the **Mirror Site** drop-down menu, choose the location that is closest to your current location for a faster download speed.
8. Click **Download** to proceed with downloading the Visual Paradigm Suite.

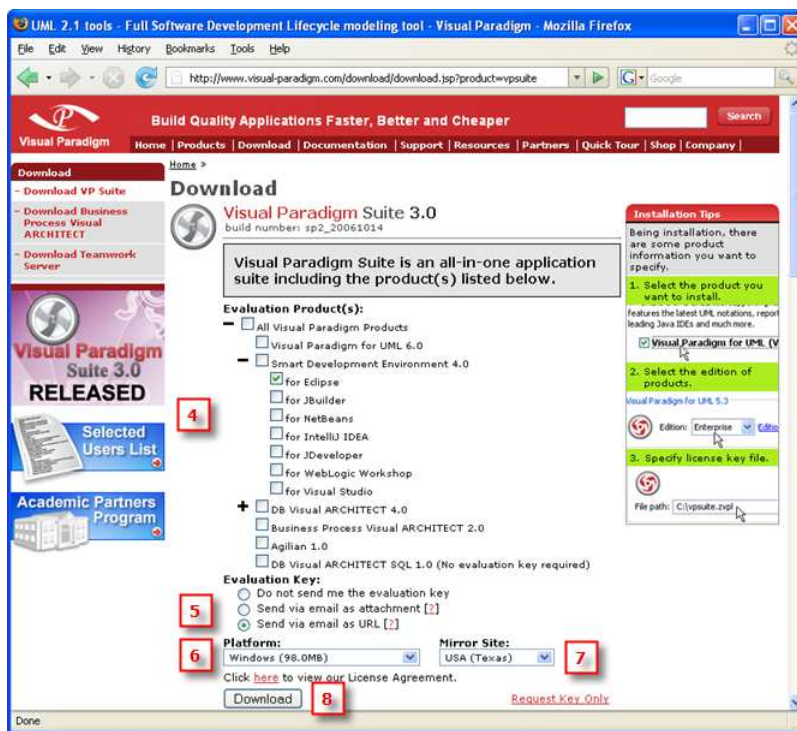


Figure 3 - Visual Paradigm Suite download page

Installing SDE-EC

The Visual Paradigm Suite installer provides a step-by-step graphical user interface for installing SDE-EC onto your system. Also, it lets you to create shortcuts under Start Menu for quick access to SDE-EC.

1. Double-click on the installer file to launch the setup program.

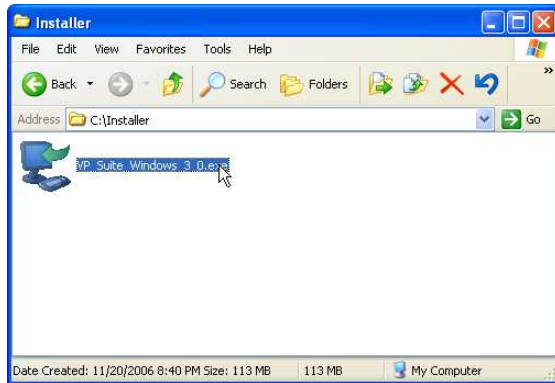


Figure 4 - Running the setup program

2. Click **Next >** to proceed to the License Agreement page.
3. Read through the License Agreement carefully. Make sure you accept the terms before continuing with the installation. If you accept the agreement, select **I accept the agreement** and click **Next >** to proceed to the Select Destination Directory page.

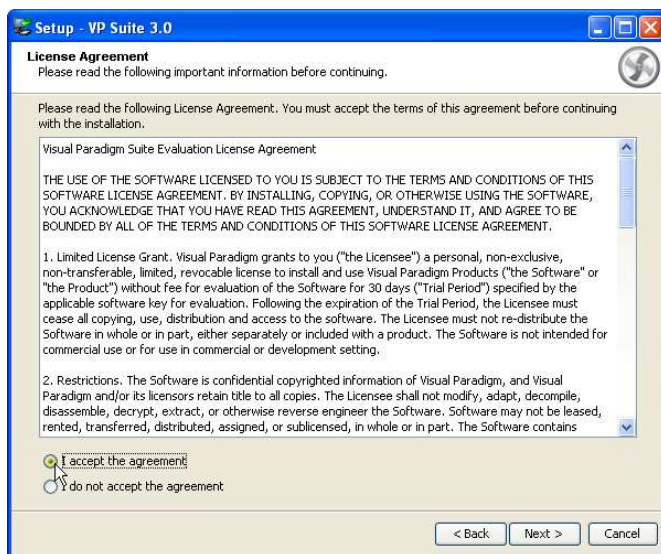


Figure 5 - Accepting the license agreement

4. Specify the directory for installing Visual Paradigm Suite. Click **Next >** to proceed to the next page.
5. Specify the name of the Start Menu folder that will be used to store the shortcuts. Keep **Create shortcuts for all users** checked if you want the shortcut to be available in all the user accounts in the machine. Click **Next >** to proceed.
6. Keep **Visual Paradigm Project (*.vpp)** and **Visual Paradigm License File (*.zvpl)** checked if you want your system able to open the project file and the license key file. Click **Next >** to proceed to the product selection page.

Note



In order to let the system able to open the .vpp file, an installation of standalone product such as VP-UML, DB-VA, BP-VA and Agilian is required.

7. Select **SDE for Eclipse (SDE-EC)**. Click **Next >** to proceed to the product configuration page.

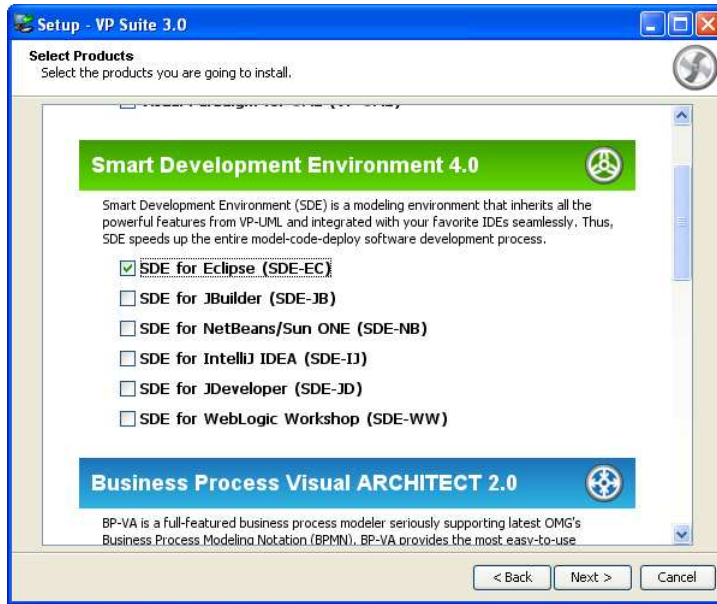


Figure 6 - Selecting SDE-EC for installation

8. SDE-EC features vary by product edition. For more details on the features supported by different editions, click the hyperlink **Edition Comparison** which brings you to the web page of SDE-EC feature comparison for different editions. Select the product edition from the **Edition** drop down menu.

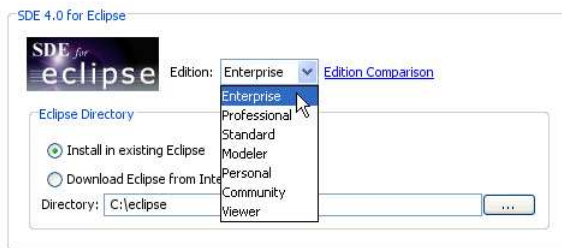


Figure 7 - Selecting the product edition

9. Specify the IDE folder. To install SDE-EC in an existing Eclipse home directory, select **Install in existing Eclipse**. If your machine does not have the Eclipse ready, you can select the option **Download Eclipse from Internet**, which allows the setup program to download the Eclipse for you from the Internet. (This option is available for SDE for Eclipse and SDE for NetBeans only)



Figure 8 - Specifying the installation directory of the installed IDE

Note



Only one kind of integration can be installed to an IDE folder. For instance, either SDE for Eclipse or DBVA for Eclipse can be installed to the same Eclipse folder.

10. For users who are going to run SDE-EC with a floating license, selecting **Create Shortcut** for Product Selection will result in creating a shortcut under the Start Menu for starting the Product Selector, a utility that lets you realize the installed products with available keys in the floating license server.

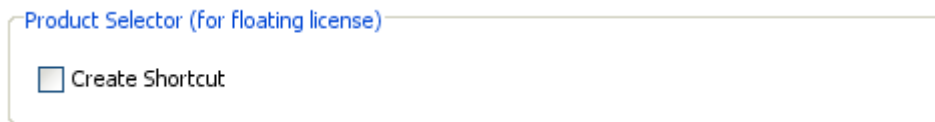


Figure 9 - Section for Product Selector

11. Select **Download Online Help** if you want to be able to access the Help contents from within the tool.



Figure 10 - Selecting the option for downloading online help

12. Select **Download PDF/HTML Version** if you wish to read the documentation in this two types of formats.
13. Press **Next >** to proceed to the license import page.
14. A combined license key is a key file which allows unlocking multiple products. To import a combined license key, select Combined License Key and specify the file path of the key.

A single license key is a key file which allows unlocking only one product. To import a single license key, select Single License Key and specify the file path of the key.

The import of license key is optional at this point, because you can import it when you run SDE-EC. Click **Next >** to proceed with copying files.

Note



For evaluation, the key should be sent to your email box (unless you have chosen not to receive it before download). If you have not received the email with key yet, and if you have selected to receive the key as attachment, the email might be treated as spam by mistake. Click on **Request Evaluation Key** to ask for another one. This time, try not to select sending the key as attachment.

15. Upon finishing, you can select whether to start SDE-EC or not. Keep **SDE for Eclipse 4.0** selected and click **Next >** will run SDE-EC right away. Click **Next >** to finish the installation.

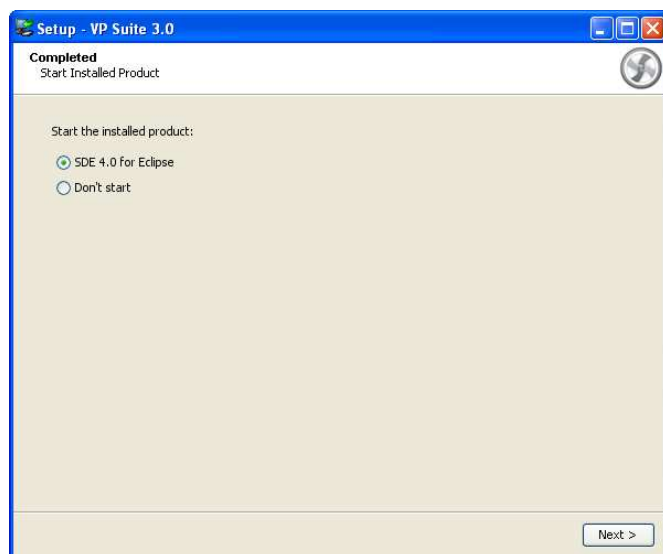


Figure 11 - Finishing the installation and start SDE-EC

16. Click **Finish** to close the setup program.

Starting SDE-EC

1. Start Eclipse.

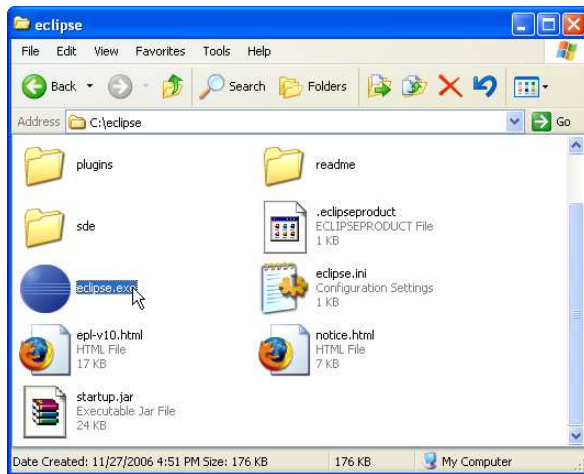


Figure 12 - Attempting to start Eclipse

2. Select a Java project.
3. Select **Modeling > Start SDE-EC** from the main menu.

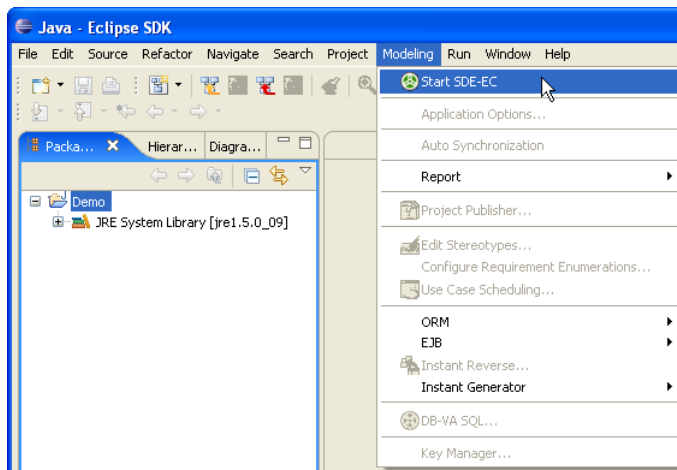


Figure 13 - To start SDE-EC from the main menu

4. If the **Memory Requirement** dialog box appear, it is recommended that you should adjust the configuration file to increase the value of the maximum memory.

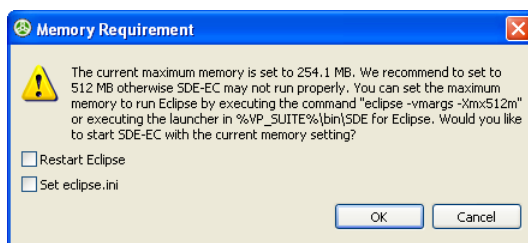


Figure 14 - The Memory Requirement dialog box

5. If you have imported a valid license key before, SDE-EC should be started now. If not, the **License Key Manager** appears. The License Key manager is a utility for importing a license key. To import a key:
 1. Select **License Keys > Import...** from the menu.
 2. Specify the file path of the key file.
 3. Press **Import** to import the key file.

Click **Close** to close the **License Key Manager** and start SDE-EC. If it prompts you with an invalid license key message, make sure the key you imported does match with the tool that you are running in terms of the following aspects:

- Product (e.g. Smart Development Environment for Eclipse)
- Version (e.g. Version 4.0)
- Edition (e.g. Enterprise Edition)

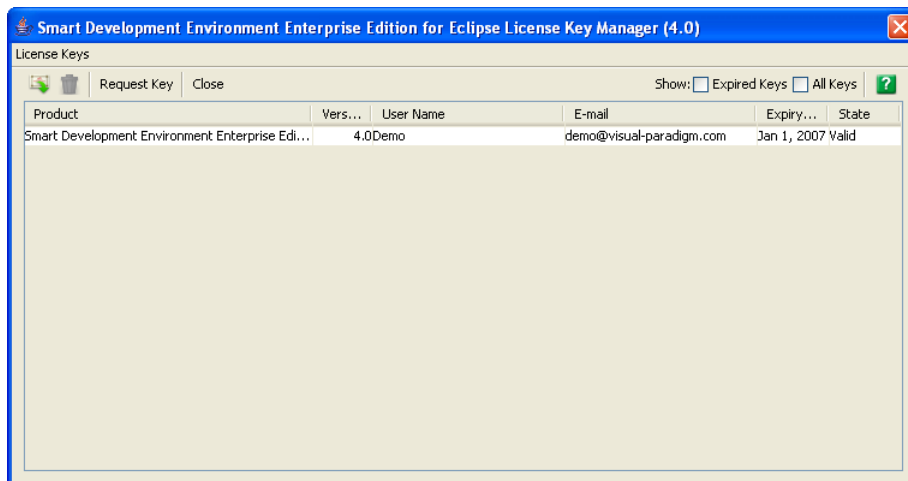


Figure 15 - The License Key Manager

6. The **Project Structure** dialog box appears. Select the path of saving the SDE project and click **OK** to create the project.

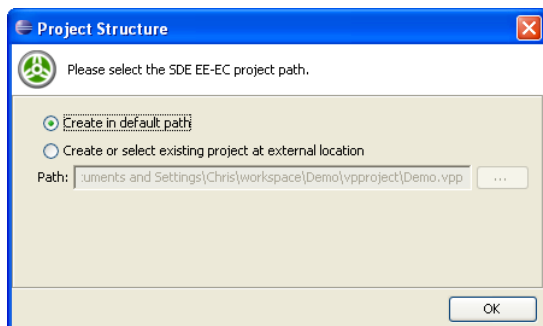


Figure 16 - The Project Structure dialog box

7. Here are the description of each of the possible ways of creating the project:

Ways of creating the SDE project	Description
Create in default path	To create and save the project inside the current Eclipse workspace.
Create or select existing project at external location	To create and save the project to an external location that does not exist before. Alternatively, select an existing project path to link that project to the Java project, which act like importing.

Uninstalling SDE-EC

Uninstalling SDE-EC will cause SDE-EC to be removed from Visual Paradigm Suite. To uninstall SDE-EC:

1. Close SDE-EC if it is running.
2. Run `%VP-SUITE-INSTALLATION-DIR%/uninstaller/uninstall_sdeec.exe`

Uninstalling Visual Paradigm Suite

Uninstalling Visual Paradigm Suite will cause the suite together with the products installed from the suite to be removed from the machine. To uninstall Visual Paradigm Suite:

1. Close all the application installed from the suite.
2. Run `%VP-SUITE-INSTALLATION-DIR%/uninstall.exe`

2

Installing SDE For Eclipse with No-Install

Chapter 2 - Installing Smart Development Environment for Eclipse with No-Install

While most of the applications nowadays require an installation, the No-Install approach is considered to be a lightweight alternative. This chapter will give you an introduction to what the No-Install version is, and show you how to get SDE-EC started from downloading to running the application. Here are the covered topics:

- Introduction to the No-Install version
- Downloading Visual Paradigm Suite from the Internet
- Installing Visual Paradigm Suite and SDE-EC
- Start the application
- Importing a valid license key

Introduction to the No-Install version

There is no separate installer made for SDE-EC. In order to install SDE-EC, you must download and install Visual Paradigm Suite, an application suite that includes all the Visual Paradigm products, and install SDE-EC from the suite.

No-Install, as suggested by its name, is a compressed file that contains the Visual Paradigm Suite in a ready-to-run form. Although the suite is ready to run, the products inside the suite still require an installation. You can run the product(s) inside the suite as soon as the file is decompressed and the post-installation procedures are completed. A characteristic that makes a No-Install different from the installer is that, it will not register itself to the system, nor to create any shortcuts during the post-installation. This makes the installation more flexible as you can move the installation to somewhere else simply by moving the whole installation folder without the concern of breaking any linkage to the system.

Downloading Visual Paradigm Suite

To download Visual Paradigm Suite:

1. Visit Visual Paradigm's official download site at: <http://www.visual-paradigm.com/download/>
2. Click on the image for Visual Paradigm Suite.



Figure 1 - Click to visit the download page of Visual Paradigm Suite

3. Enter your account information, and click **Continue** to proceed.

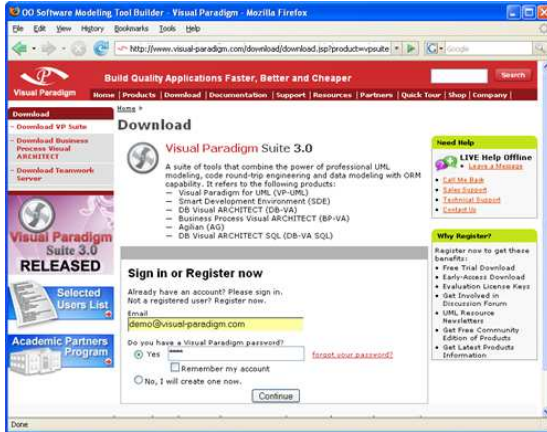


Figure 2 - Login to proceed to download

4. Under the list of **Evaluation Product(s)**, press on the plus sign near **Smart Development Environment** to expand the list of SDEs. Then, select for *Eclipse*. This option will affect the capability of the evaluation key, which will be sent upon downloading the suite.
5. Choose the way of receiving the evaluation key, or not to receive it. Here are the description of each of the possible ways:

Ways of receiving an evaluation key	Description
Do not send me the evaluation key	Just to download the suite without the need of an evaluation key.
Send via email as attachment	You will receive an email attached with the key file. Make sure your server allows email with attachments for choosing this option.
Send via email as URL	You will receive an email, which includes a download link of the key file.

6. Select your operating system from the **Platform** drop-down menu. Choose the item with a bracket (*No-Install*) added to the name of the platform.
7. From the **Mirror Site** drop-down menu, choose the location that is closest to your current location for a faster download speed.
8. Click **Download** to proceed with downloading the Visual Paradigm Suite.

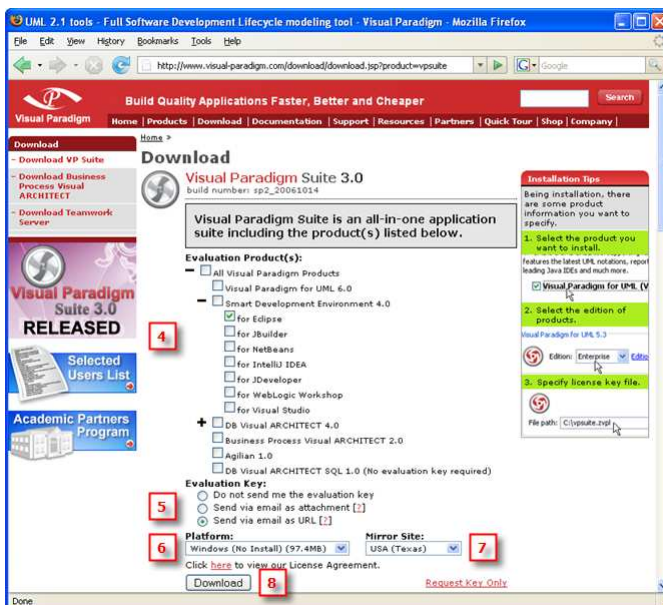


Figure 3 - Visual Paradigm Suite download page

Installing SDE-EC

To install SDE-EC:

1. Decompress the No-Install file.

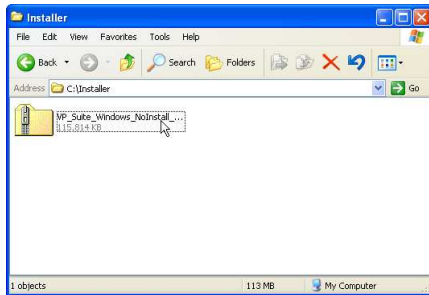


Figure 4 - The No-Install file (zipped)

Note



For Linux platforms, run the following command to decompress the No-Install file:
`tar -zxf %NO-INSTALL-FILE.tar.gz% -C %DESTINATION-FOLDER%`

2. Execute `%NO-INSTALL-DECOMPRESSED_FOLDER%/bin/VP Suite.exe`.

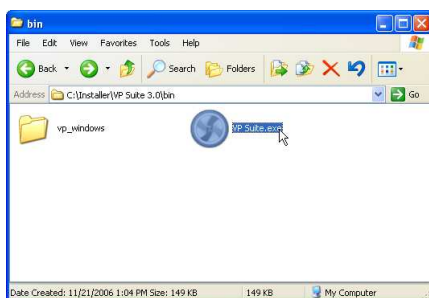


Figure 5 - Executing VP Suite.exe

Note



For Linux and Mac OS X platforms, execute the file VP Suite inside `%NO-INSTALL-DECOMPRESSED_FOLDER%/bin/`

3. Select **SDE for Eclipse (SDE-EC)**. Click **Next >** to proceed to the product configuration page.



Figure 6 - Selecting SDE-EC for installation

- SDE-EC features vary by product edition. For more details on the features supported by different editions, click the hyperlink [Edition Comparison](#) which brings you to the web page of SDE-EC feature comparison for different editions. Select the product edition from the **Edition** drop down menu.

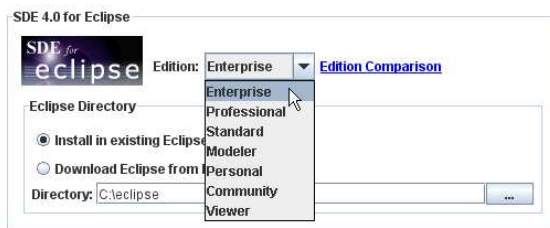


Figure 7 - Selecting the product edition

- Specify the IDE folder. To install SDE-EC in an existing Eclipse home directory, select **Install in existing Eclipse**. If your machine does not have the Eclipse ready, you can select the option **Download Eclipse from Internet**, which allows the setup program to download the Eclipse for you from the Internet. (This option is available for SDE for Eclipse and SDE for NetBeans only)

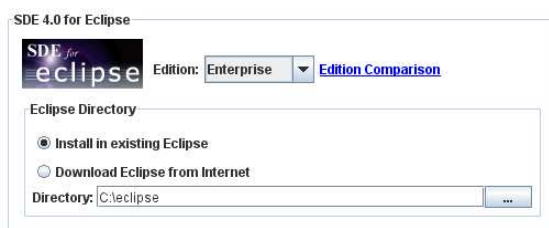


Figure 8 - Specifying the installation directory of the installed IDE

Note



Only one kind of integration can be installed to an IDE folder. For instance, either SDE for Eclipse or DBVA for Eclipse can be installed to the same Eclipse folder.

- Select **Download Online Help** if you want to be able to access the Help contents from within the tool.



Figure 9 - Selecting the option for downloading online help

- Select **Download PDF/HTML Version** if you wish to read the documentation in this two types of formats.
- Press **Next >** to proceed to the license import page.
- A combined license key is a key file which allows unlocking multiple products. To import a combined license key, select Combined License Key and specify the file path of the key.

A single license key is a key file which allows unlocking only one product. To import a single license key, select Single License Key and specify the file path of the key.

The import of license key is optional at this point, because you can import it when you run SDE-EC. Click **Next** to proceed with copying files.

Note



For evaluation, the key should be sent to your email box (unless you have chosen not to receive it before download). If you have not received the email with key yet, and if you have selected to receive the key as attachment, the email might be treated as spam by mistake. Click on **Request Evaluation Key** to ask for another one. This time, try not to select sending the key as attachment.

- Upon finishing, you can select whether to start SDE-EC or not. Keep **SDE for Eclipse 4.0** selected and click **Next >** will run SDE-EC right away. Click **Next >** to finish the installation.

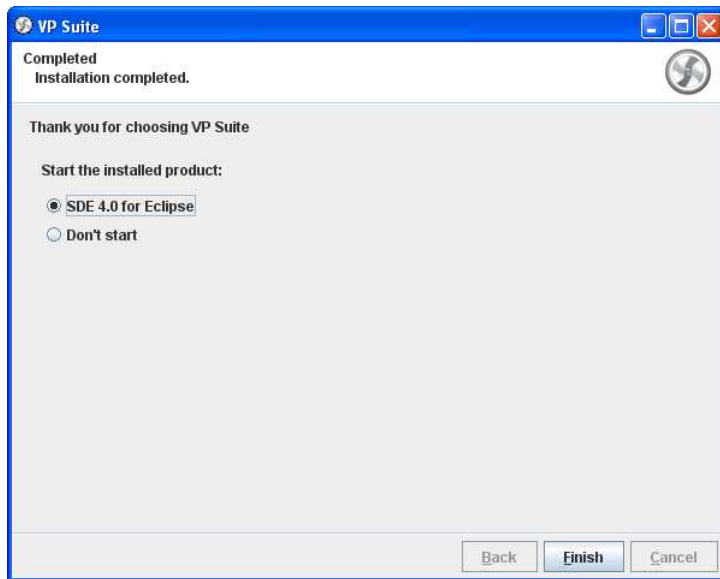


Figure 10 - Finishing the installation and start SDE-EC

- Click **Finish** to close the setup program.

Starting SDE-EC

- Start Eclipse.

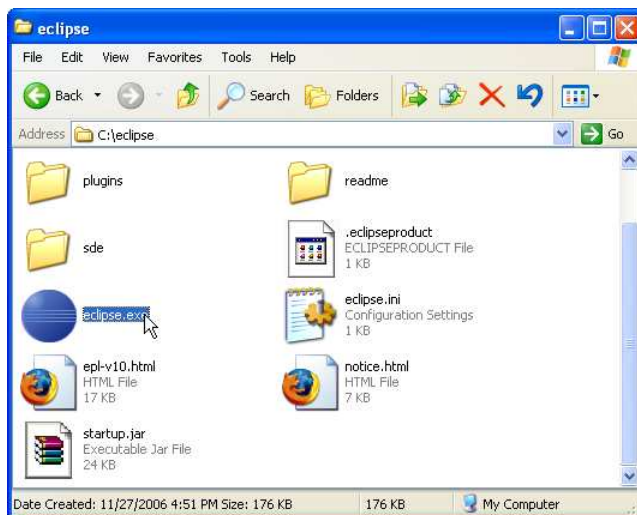


Figure 11 - Attempting to start Eclipse

- Select a Java project.

3. Select **Modeling > Start SDE-EC** from the main menu.

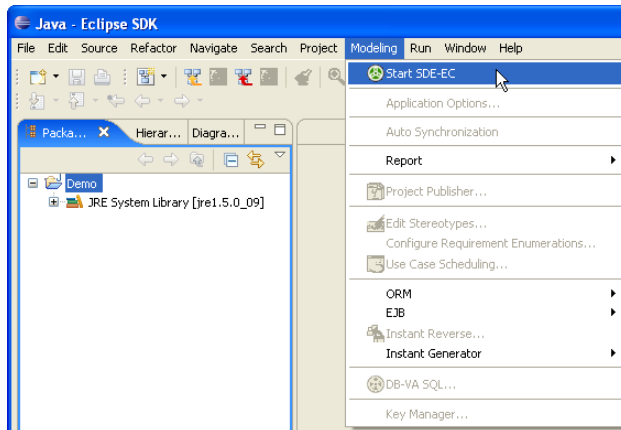


Figure 12 - To start SDE-EC from the main menu

4. If the **Memory Requirement** dialog box appear, it is recommended that you should adjust the configuration file to increase the value of the maximum memory.

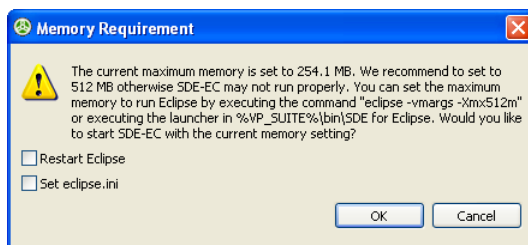


Figure 13 - The Memory Requirement dialog box

5. If you have imported a valid license key before, SDE-EC should be started now. If not, the **License Key Manager** appears. The License Key manager is a utility for importing a license key. To import a key:
 1. Select **License Keys > Import...** from the menu.
 2. Specify the file path of the key file.
 3. Press **Import** to import the key file.

Click **Close** to close the **License Key Manager** and start SDE-EC. If it prompts you with an invalid license key message, make sure the key you imported does match with the tool that you are running in terms of the following aspects:

- Product (e.g. Smart Development Environment for Eclipse)
- Version (e.g. Version 4.0)
- Edition (e.g. Enterprise Edition)

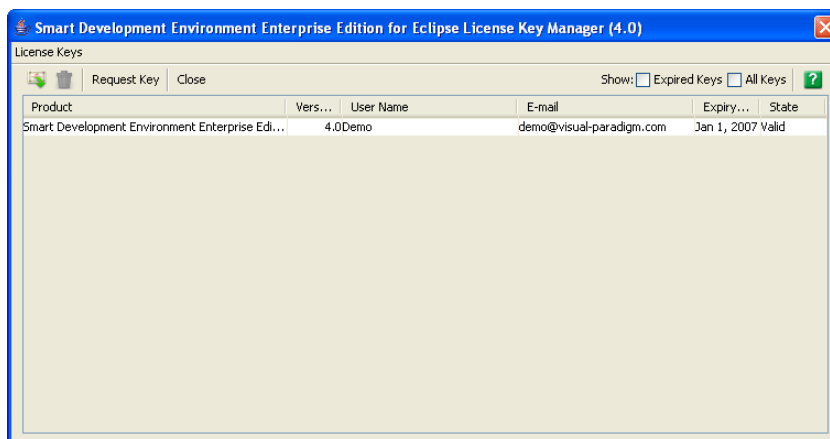


Figure 14 - The License Key Manager

6. The **Project Structure** dialog box appears. Select the path of saving the SDE project and click **OK** to create the project.

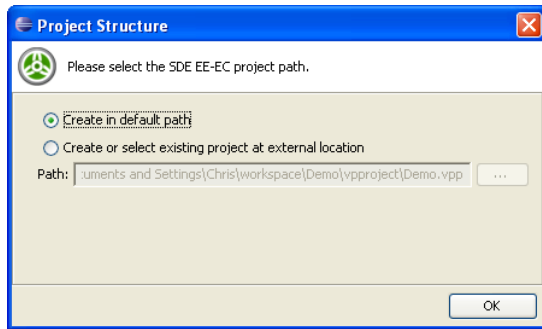


Figure 15 - The Project Structure dialog box

7. Here are the description of each of the possible ways of creating the project:

Ways of creating the SDE project	Description
Create in default path	To create and save the project inside the current Eclipse workspace.
Create or select existing project at external location	To create and save the project to an external location that does not exist before. Alternatively, select an existing project path to link that project to the Java project, which act like importing.

Uninstalling SDE-EC

Uninstalling SDE-EC will cause SDE-EC to be removed from Visual Paradigm Suite. To uninstall SDE-EC:

1. Close SDE-EC if it is running.
2. Run `%VP-SUITE-INSTALLATION-DIR%/uninstaller/uninstall_sdeec.exe`

Note



For Linux and Mac OS X platforms, execute the file 'uninstall_sdeec' inside `%VP-SUITE-INSTALLATION-DIR%/uninstaller`